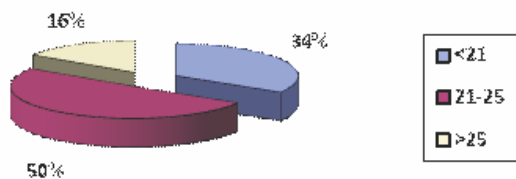
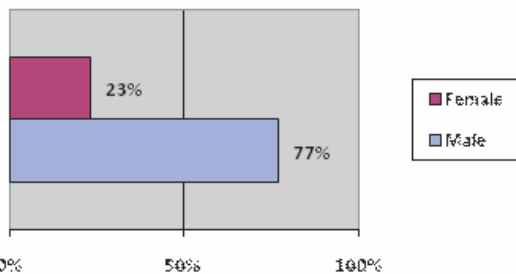


EMPLOYABILITY SKILLS TRAINING FOR PROJECT AFFECTED YOUTH IN PARTNERSHIP WITH TATA STEEL RURAL DEVELOPMENT SOCIETY

AGE PROFILE OF STUDENTS TRAINED



GENDER PROFILE OF STUDENTS TRAINED



EDUCATION PROFILE OF STUDENTS TRAINED



This partnership programme offers new economy livelihood training and placement services to those youth who have been affected on account of the planned Tata steel plants being commissioned in Orissa. The programme is offered at Kalinganagar and Joda districts in Orissa.



Number of students trained	1450
Number of students placed	913

INCOME PROFILE OF STUDENTS TRAINED

INCOME	PERCENTAGE
</ = Rs.12000 per annum	100%
Rs.12001 to Rs.24000 per annum	-
> Rs. 24001 per annum	-

FAMILY-SIZE PROFILE OF STUDENTS TRAINED

Number	Percentage
< 5	35%
5 to 7	62%
> 7	3%

